

PERSONAL TRANSPORTATION VEHICLES



THE EASY CHOICE™ WHEN LUXURY, PERFORMANCE AND VALUE MATTER

DRIVE²



CONTENTS

THE HISTORY OF YAMAHA GOLF CAR.....	4 - 5
DRIVE ² ® - STILL THE BEST CAR.....	6 - 9
DRIVE ² QUIETECH EFI™.....	10 - 11
DRIVE ² POWERTECH AC™.....	12 - 13
REFUEL OR RECHARGE.....	14 - 15
DRIVE ² ADVENTURER® SPORT ²⁺²	16 - 17
DRIVE ² PTV COLORS.....	18 - 19
UMAX RALLY®.....	20 - 21
UMAX RALLY ²⁺² ™.....	22 - 23
UMAX® COLORS.....	26 - 27
YAMAHA GENUINE PARTS AND ACCESSORIES.....	28 - 47
YAMALUBE® QUALITY CARE PRODUCTS.....	48 - 51
SPECIFICATIONS.....	52 - 55

1985

G-2 MODEL GOLF CAR
The first golf car to feature a 4-stroke, overhead valve engine and an injection-molded, plastic front and rear body.

1996

G-19 MODEL (ULTIMA) GOLF CAR
Our first 48-volt electric golf car featured innovative roll-away safety protection and regenerative braking.

2006

THE DRIVE®
The DRIVE was introduced to the world with striking new features designed to radically change people's perception of the golf car.

2016

DRIVE² GOLF CAR
The Drive² lineup brought forward all the best features from The Drive but also introduced QuieTech EFI – a gas car that's almost as quiet as an electric. Additionally, QuieTech EFI included the first Independent Rear Suspension ever to be found on a golf car.

2018

UMAX AND UMAX RALLY
The UMAX lineup combined the best features of Yamaha's motorsport legacy to create a game-changing utility vehicle line. Building on that line, the UMAX Rally was added to the family, providing a lifted, pre-accessorized version of the already successful UMAX.

2019

UMAX RALLY²+²
Expanding on the innovative UMAX launch, the UMAX Rally²+² was added to the lineup featuring lifted suspension, 23" all-terrain tires, Yamaha Genuine wide fender flares and front brush guard, and a convertible rear-facing seat for more loved ones or more cargo.

2020

INDEPENDENT REAR SUSPENSION AND AGM BATTERIES
Independent Rear Suspension (IRS) now comes standard on all PowerTech AC and QuieTech EFI models. With added comfort and premium stability, players can enjoy the smoothest ride yet. Plus, with the addition of the new Motive T875-AGM battery option, courses get reliable power to their cars while remaining worry free.

A HISTORY *of* MOVING DREAMS FORWARD

RELIABILITY

60+ YEARS

of experience building everything from golf cars to snowmobiles, making Yamaha one of the most recognized and respected brands in the world.

With Yamaha, every challenge is an opportunity for adventure. Snowmobiles, generators, scooters, ATVs, personal watercraft vehicles and more.

With such a long history of success in a variety of industries, you can trust Yamaha to continue innovating with new technology that creates unforgettable moments in the lives of our customers.



MOTORCYCLES



WAVERUNNERS®



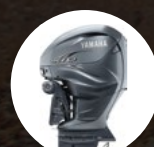
ALL-TERRAIN VEHICLES



SNOWMOBILES



BOATS



MARINE ENGINES



GENERATORS



RECREATIONAL VEHICLES



Shown with optional Yamaha Genuine Accessories.

The best car
IS STILL BETTER

A gorgeous weekend is forecasted, and there's no question that camping, fishing, or simply exploring with the ones that make you smile will be on the agenda.

With the Drive², you're riding in over 60 years of precise engineering and technological innovations blended together into the most luxurious Personal Transportation Vehicle (PTV) in the industry. Don't settle. Get the best for you and yours.

DRIVE²



EVEN BETTER
PERFORMANCE-TUNED
INDUSTRY-FIRST INDEPENDENT
REAR SUSPENSION (DRIVE²
QUIETECH EFI AND DRIVE²
POWERTECH AC MODELS ONLY)

STILL THE BEST
CRADLE-SMOOTH SUSPENSION
SYSTEM FOR MAXIMUM
COMFORT (DRIVE² AC AND
DRIVE² EFI MODELS ONLY)

STILL THE BEST
382% LARGER REAR
ACCESS PANEL FOR
EASE OF MAINTENANCE

STILL THE BEST
REAR-FACING, FLIP
SEAT FOR ADDITIONAL
PASSENGERS OR CARGO

EVEN BETTER
NEWLY REDESIGNED
STEERING WHEEL

STILL THE BEST
WIDEST, MOST ERGONOMIC
CONTOURED SEAT

STILL THE BEST
MOST OCCUPANT SPACE
OF ANY GOLF CAR IN THE
INDUSTRY, AND LARGEST
WINDOW OF ENTRY AND
EGRESS

EVEN BETTER
AUTOMOTIVE-STYLE
DASH WITH ROOM FOR
MORE ACCESSORIES

EVEN BETTER
USB CHARGERS
KEEP YOU CHARGED
ON THE GO

EVEN BETTER
34% LARGER STORAGE
COMPARTMENT WITH
NO-SLIP MAT

EVEN BETTER
NEW CHEMICAL AND
SLIP-RESISTANCE
PEDAL ASSEMBLY

STILL THE BEST
MOST LEGROOM
IN ITS CLASS
(13.56 INCHES)

EVEN BETTER
VIBRANT, MODERN COLORS

STILL THE BEST
DRIVE² CLIMAGUARD™ SUN TOP WITH 360°
DUAL GUTTER SYSTEM IS 33% LARGER THAN
THE NEAREST COMPETITOR, PLUS RAIN
DRAIN AND CLOG-PROOF DOWNSPOUTS

STILL THE BEST
IMPACT-RESISTANT
POLYCARBONATE WINDSHIELD
WITH NEW INDUSTRY-EXCLUSIVE
MECHANICAL HINGE
FOR SUPERIOR STRENGTH

EVEN BETTER
AUTOMOTIVE-INSPIRED LED
HEADLIGHTS THAT SHINE
BRIGHTER AND USE ONLY A
FRACTION OF THE ENERGY

EVEN BETTER
LED LOGO

EVEN BETTER
LED TURN
SIGNALS

All the features A MODERN DRIVER COULD WANT

DRIVE²

At Yamaha, we're innovating with the modern golfer in mind. With bold colors and modern body styling, our Drive² line-up looks better than ever, but the biggest change is the one you don't see—a smoother ride.



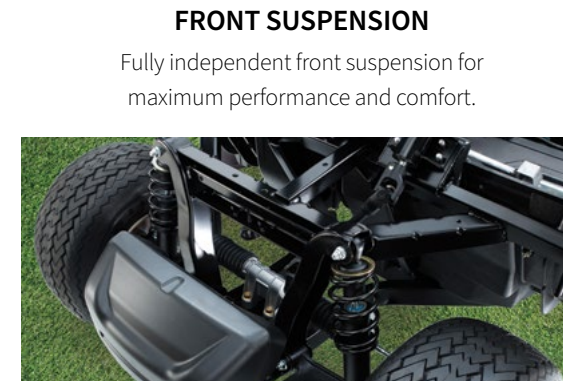
STORAGE BIN WITH NO-SLIP MAT

34% larger to keep more valuables in place.



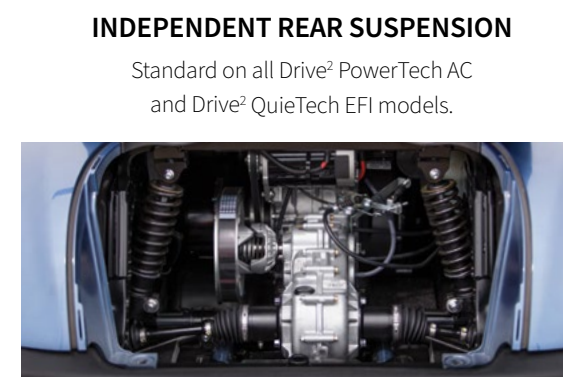
DRIVE² SUN TOP

Our ClimaGuard™ Sun top offers protection from the elements, has a dual gutter system and is 33% larger than the nearest competitor.



FRONT SUSPENSION

Fully independent front suspension for maximum performance and comfort.



INDEPENDENT REAR SUSPENSION

Standard on all Drive² PowerTech AC and Drive² QuieTech EFI models.

AVAILABLE COLORS

NEW	Atomic Flame	Matte
NEW	Graphite	Matte
NEW	Mica	Matte
	Moonstone	Metallic
	Onyx	Metallic
	Aqua Blue	Metallic
	Jasper	Metallic
	Bluestone	Metallic
	Glacier	In-mold



AUTOMOTIVE-STYLE DASH

Comes fully equipped with dual-sized cup holders, room for more items like snacks and mobile devices, and two USB ports.



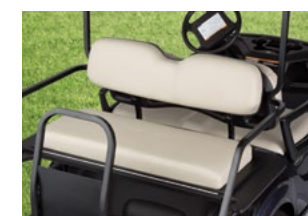
TWO USB CONNECTIONS

To help drivers and passengers stay charged, right from the dash.

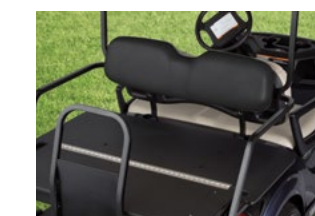


NEWLY REDESIGNED PADDED STEERING WHEEL

Designed for more comfort and better handling.



OR



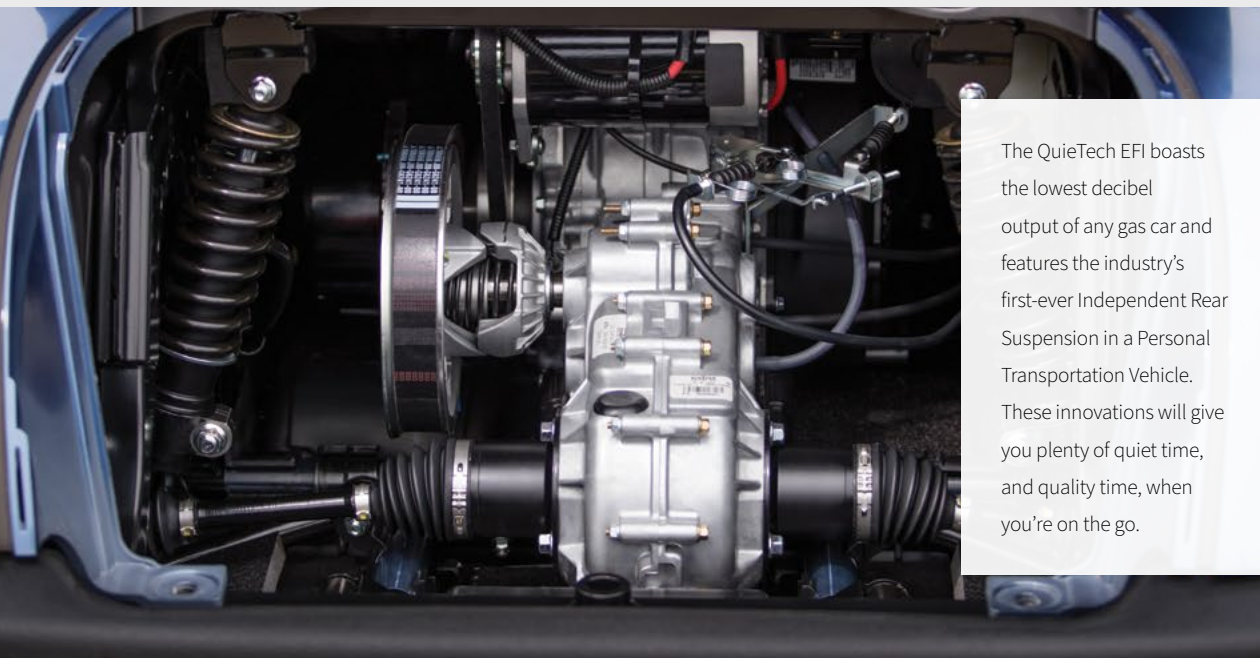
REAR FOLD-DOWN SEAT

When you need to carry cargo instead of people, the rear-facing seat flips down to create a 200lb capacity storage space. Available in tan or black.

A gas car that is ALMOST AS QUIET AS AN ELECTRIC



Our Personal Transportation Vehicles take the effort out of errands. The Drive² handles like a dream and makes even short trips fun! We developed our Quietech EFI technology to create a quieter, more fuel-efficient ride, so you can spend less money on fuel and more on doing the things you love.



The Quietech EFI boasts the lowest decibel output of any gas car and features the industry's first-ever Independent Rear Suspension in a Personal Transportation Vehicle. These innovations will give you plenty of quiet time, and quality time, when you're on the go.

261 MILES

AVERAGE RANGE BETWEEN FILL-UPS

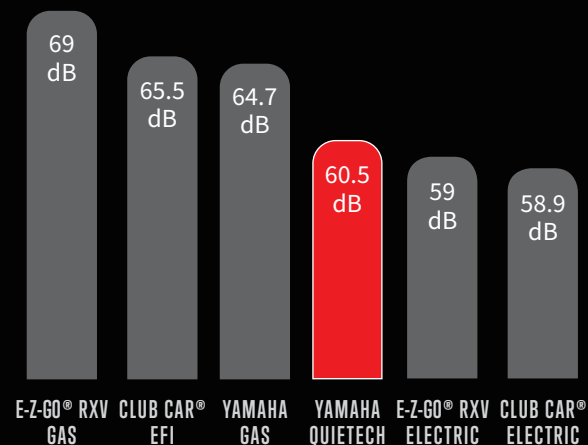
45 MPG*

UP TO 23%

BETTER FUEL ECONOMY THAN OUR COMPETITORS

QUIETECH EFI. EVERYTHING ELSE IS JUST NOISE.

NOISE LEVEL⁽¹⁾



QUIETECH EFI
60.5dB⁽¹⁾

DOG BARKING
95dB⁽²⁾

LEAF BLOWER
100dB⁽³⁾

FROG CROAKING
108dB⁽⁴⁾

A LOUD "DINNER TIME!"
120dB⁽⁵⁾

(1) Decibel reading from 25 feet at constant speed on a paved cart path for 2016 fleet models; (2) World Health Organization, Data and Statistics, 2015; (3) Outdoor Noise and the Metropolitan Environment, M.C. Branch et al., Department of City Planning, 12 City of Los Angeles, 1970; (4) "Listen to this" by Richard Wolkowicz, 1997; (5) Alpine Hearing Protection, 2016

Shown with optional Yamaha Genuine Accessories.

It's ALL ABOUT the JOURNEY



The Drive² PowerTech AC just keeps getting better. We have paired the same energy-efficient, electric solution you can rely on with the best in leading-edge upgrades. You can navigate terrain with complete comfort and ease with the Drive² PowerTech AC's new Independent Rear Suspension (IRS). And, with the all-new lead-acid Motive T875-AGM battery option, you are making a low-maintenance, worry free investment. Plus, with other valuable features like standard USB ports, and a padded steering wheel, you will wonder how you ever drove any other car.



Toyota Industries-built motor controller unit.



IRS

Independent Rear Suspension adds comfort, premium shock absorption, and superior stability. Enjoy the smoothest ride yet.

WORRY FREE

NEW MOTIVE T875-AGM BATTERY OPTION



AGM batteries are convenient, reliable, and easy to maintain so you can stay focused on what matters.



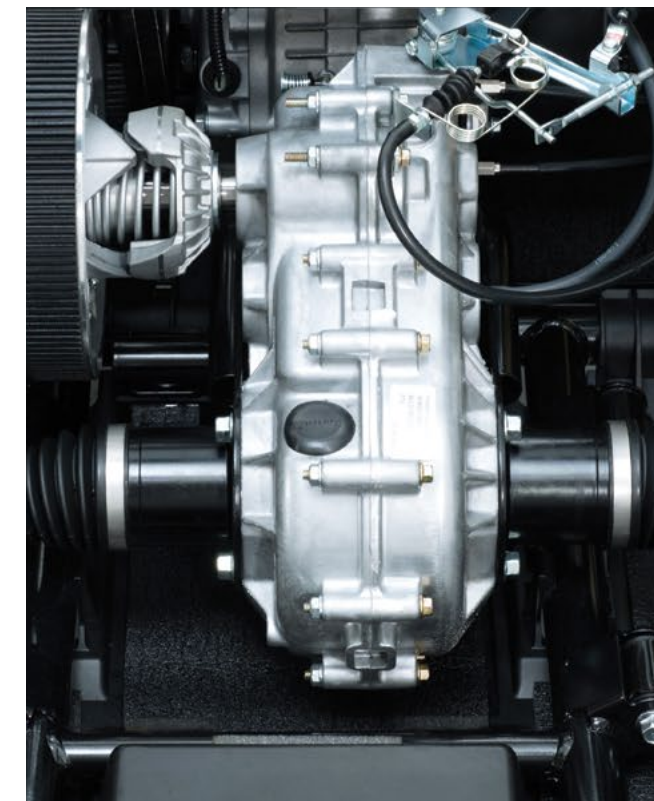
OUR ONLY QUESTION FOR YOU IS REFUEL OR RECHARGE?

With our quiet gas car boasting a 261-mile range and our electric car wielding an industry-leading 6.7 horsepower motor, making a decision between the two simply comes down to preference. Either way, the choice is yours.



Drive² QuietTech EFI, equipped with Independent Rear Suspension is the quietest, most comfortable ride on the road. And if you're worried about emissions, don't be! Our Drive² EFI gas cars feature the lowest fuel emissions around, and with over 60 years of gas motor manufacturing experience under our belts, you can trust the dependability and performance known to Yamaha owners around the world.

- Yamaha-exclusive QuietTech technology
- Independent Rear Suspension (IRS)
- 12.8% more miles to the gallon over the competition—45 MPG*
- Yamaha-built engine
- Industry-leading fuel economy with Accu-fuel delivery system
- Fewest emissions and up to 76% fewer pollutants than competitors*



OR



Drive² PowerTech AC cars prioritize energy efficiency while offering all the power you need—rapid acceleration, smooth uphill climb, and exceptional battery strength and endurance. You can't go wrong with the Drive² PowerTech AC because our battery power is synonymous with horsepower, and efficiency is our middle name.

- New Motive T-875 AGM battery option – Protected by a 5 Year/50,000 amp hour “Life of the Lease” warranty
- Independent Rear Suspension
- Motive T-875 FLA battery option – Proven performance time after time
- Toyota Industries-built motor controller unit
- Best hill-climbing ability
- Delta-Q Charger

*Independent laboratory testing in a fleet environment by Transportation Research Center, Inc. 2015, on model year 2016 cars.

MORE VERSATILITY *and* VALUE *for the* MODERN DRIVER

Don't let that comfortable seating and sporty design fool you. The Adventurer Sport 2+2 may play nice, but when it's time to take on a tough job, it's ready to work hard. Easily go from cruising around the block with friends to maintaining the community garden or hauling gear for a family camping trip with 250 lbs. of payload capacity, large 20" tires and a lifted suspension.

A
TRUE
JACK-OF-ALL
TRADES

Yamaha Genuine front brush guard has a black powder-coated finish with 1 1/4" diameter tubing to fit a variety of mounts for additional lighting accessories.

WITH 20" TIRES, FLIP-DOWN SEATS, AND 3" LIFT KIT,
IT'S A LOW-MAINTENANCE, RELIABLE COMPANION.



ATOMIC FLAME
Matte



GRAPHITE
Matte



MICA
Matte



MOONSTONE
Metallic



ONYX
Metallic



AQUA BLUE
Metallic



JASPER
Metallic



BLUESTONE
Metallic



GLACIER
In-Mold

**REFRESH
YOUR PTV
WITH BOLD
COLOR
OPTIONS**



All the POWER of YAMAHA ENGINEERED into a car

UMAX | **RALLY®**

The new UMAX Rally features a lifted suspension, 23" tires wrapped around 12" V-window wheels, and comes complete with a Yamaha Genuine front brush guard and fender flares. Whether it's for a day at the beach or a day of errands, the UMAX Rally goes where no other Light Utility Vehicle can, making it yet another reason why Yamaha is The Easy Choice™.



UNDER-HOOD STORAGE COMPARTMENT

House all of your necessities in a sizable storage area, designed for convenience and effortless accessibility.



EASY & EFFORTLESS DUMP BED

Swiftly open and close the tailgate and unlock the dump bed with one hand.



ULTIMATE PROTECTION

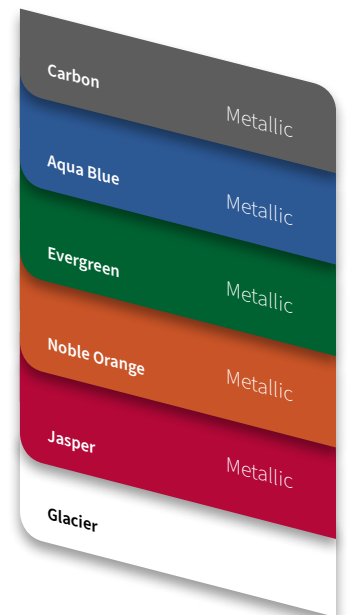
Equipped with a Yamaha Genuine Brush Guard, objects both large and small don't stand in the way.



SIZABLE CARGO BED

Get the cargo space you need to get any errand done with the UMAX One Rally (10.4 cu. ft.) or the UMAX Two Rally (12.9 cu. ft.).

MODERN COLORS



GRITTY TIRES

Large 23" all-terrain tires that are ready for any environment.



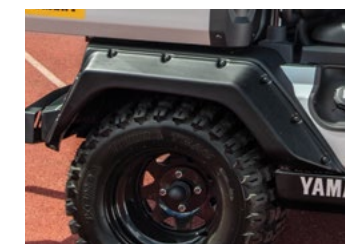
INCREASED GROUND CLEARANCE

No need to worry about getting stuck with 6" of clearance.



CONVENIENT SIDE-FILL GAS TANK

Makes for a quick, efficient fill-up.



ELEMENT TOUGH

Keep dry through the harshest terrain with Yamaha Genuine fender flares.



AUTOMOTIVE-STYLE DASH

Completely redesigned for the modern driver.

Fit everything for the job. RALLY EVERYONE *for a* COMFORTABLE RIDE

UMAX | **RALLY²⁺²**

The Saturday itinerary is set: some yard work in the morning, your favorite pizza spot for lunch with friends from out-of-town, and then some hardware store errands before calling it a day. With comfortable convertible seating, plenty of storage, and an edgy design that matches your style, the UMAX Rally²⁺² not only fits your job, but it also fits your life.



FITS YOUR LIFE

The UMAX Rally²⁺² is the ideal travel companion whether you are on the job or spending time with your family. With luxurious bucket seating, under-hood storage, and a spacious basket area perfect for holding shopping bags and groceries, the UMAX Rally²⁺² can get you anywhere you and yours want to go.



INCREASED GROUND CLEARANCE

No need to worry about getting stuck with 6" of clearance.



ULTIMATE PROTECTION

Equipped with a Yamaha Genuine Brush Guard, nothing stands in its way.



UNDER-HOOD STORAGE COMPARTMENT

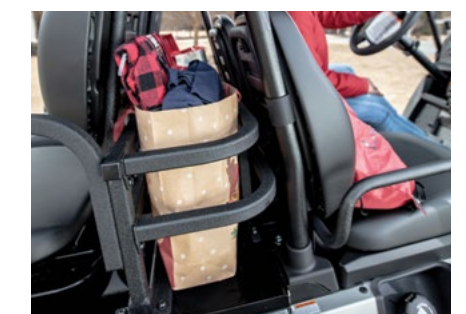
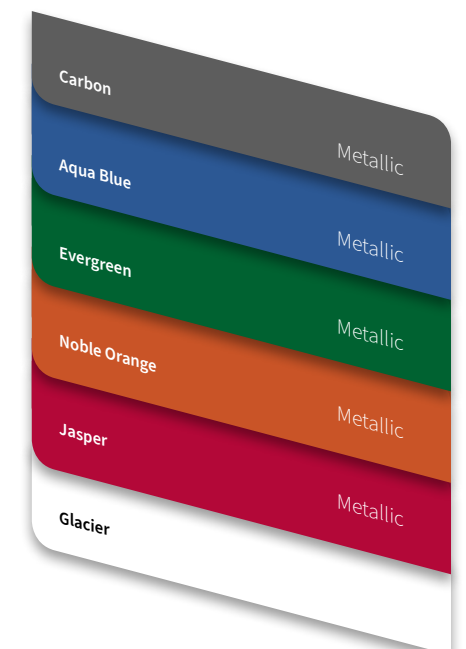
Designed for convenience and effortless accessibility.



ELEMENT TOUGH

Keep dry through the harshest terrain with Yamaha Genuine fender flares.

MODERN COLORS



HOLDS IT ALL

Perfect for extra sports equipment, groceries, or valuables.

**TACKLE
ANY JOB**

OR

CARRY THE ENTIRE FAMILY,
WITH 23" TIRES, FLIP DOWN REAR
FACING SEATS, AND A 2" LIFT KIT.





CARBON
Metallic



AQUA BLUE
Metallic



EVERGREEN
Metallic



NOBLE ORANGE
Metallic



JASPER
Metallic



GLACIER

**CUSTOMIZE
YOUR UMAX
WITH
VIBRANT
COLORS**





DON'T EXPECT IT. DEMAND IT!®

When it comes to your new Yamaha golf car, using Yamaha Genuine Parts and Accessories ensures they run the same as day one. In fact, the same team of engineers that designed your Yamaha golf car worked hand-in-hand with Yamaha product planners to guarantee our accessories look right, fit right and perform right.

Advanced research and state-of-the-art materials are the keys to making your vehicle look and perform like only a Yamaha can. We continually subject our parts and accessories to stringent testing, specifically designed to evaluate all aspects of functionality, durability and safety, giving you peace of mind from worrying about inferior aftermarket parts ... **Don't Expect It. Demand It!**

*All Yamaha Genuine
Parts and Accessories
have a three-year
limited warranty.*



Watch for the "Must Have" logo throughout the catalog. This symbol indicates essential, hand-picked accessories that are key to building the ultimate Yamaha Golf Car.

PARTS AND ACCESSORIES ▶

AUDIO



Bluetooth® Audio Controller

Make your sound system just as easy to control in your Yamaha as it is in your family car with our Bluetooth® Audio Controller that allows you to change songs, adjust volume, and pause/play. Pairs perfectly with the MA100 Speaker/Amp Package (GCA-MA100-00-00)—sold separately. Universal fit for most golf cars.

SBT-BTVC0-00-14 | \$110.99

NOTE: Requires audio source.



JVC® XM® Satellite Radio/Bluetooth®

Enjoy connecting two phones for full-time voice connection, automatic pairing, 11 presets, 13-band graphic equalizer, two-zone variable-color illumination and more. With this outdoor-ready, Bluetooth XM/BT/CD receiver featuring K2 Technology for superior sound, you'll never cruise the same again. Fits all single-DIN openings.

GCA-JVCKD-R9-9M | \$214.99



MA100 Speaker/Amp Package

Kick your sound game up a notch by adding this MA100 Speaker/Amp Package to your Drive². Amplify your favorite songs from basic to banging with this salt and corrosion-resistant system that will keep the entertainment going as you cruise. Universal fit for most golf cars.

GCA-MA100-10-00 | \$119.99



Overhead AM/FM Bluetooth® Stereo

Instead of playing music through your cellphone speakers, enjoy your favorite tunes through our Overhead AM/FM Bluetooth® Stereo that can withstand the harshest conditions, takes up none of your car space, and gives you impeccable sound quality. Fits 2016-2020 Drive² PTV and all 2019-2020 UMAX Rally models. Requires Sun Top, sold separately.

JOG-H81C0-V0-00 | \$649.99

NOTE: For UMAX Rally 2+2 models, modification required to mounting brackets.



GOLF



Cabana Golf Bag Cover

by Club Pro Products®

Keep the elements out and your performance undisturbed with this convenient protective cover for your clubs, or any other prized possession as you go from event to event. Fits all 2010-2016 DRIVE PTV and 2016-2020 Drive² PTV models. Four-year limited warranty.

- 1 Taupe.....GCA-J0A60-00-00 | \$199.99
- 2 Black.....GCA-J0A60-00-BK | \$199.99



Yamaha Club and Ball Washer

Just because your equipment gets dirty doesn't mean the game stops. Keep on pace by getting must-have accessories like our Golf Club and Ball Washer. Fits all 2010-2016 DRIVE PTV and 2016-2020 Drive² PTV models.

GCA-JW131-01-00 | \$56.99

NOTE: The Club and Ball Washer, Sand Bottle, Sand Bucket, and Coolers cannot be used in conjunction with The DRIVE Rear Facing Seat.



Yamaha Cooler

Whether enjoying a day of shore fishing, riding through your community, or simply out exploring, our new and improved insulated beverage cooler for The DRIVE and Drive² will be the perfect companion. Re-engineered and rigorously tested to outperform today's coolers. Fits all 2010-2016 DRIVE PTV and 2016-2020 Drive² PTV models.

GCA-J0B32-00-00 | \$99.99

NOTE: The Club and Ball Washer, Sand Bottle, Sand Bucket, and Coolers cannot be used in conjunction with The DRIVE Rear Facing Seat.



Yamaha Sand Bucket Kits

Easily store sand, small items, and more by getting the newly improved Sand Bucket Kit. Completely redesigned to surpass stringent testing. Fits all 2010-2016 DRIVE PTV and 2016-2020 Drive² PTV models.

GCA-J0A30-00-00 | \$82.99

NOTE: Will not work side by side with additional Yamaha accessories mounted to sweater basket.

*Yamaha cooler, Club and Ball Washer, Sand Bucket and Sand Bottles will not work side by side with additional Yamaha accessories mounted to sweater basket.

GOLF



Yamaha Sand Bottle Kits

Always have sand on hand with our new sand bottle kits. These reconfigured kits have bottles that include comfortably integrated handholds (making them easy to grip with gloves), have larger square opening allowing for quick filling without removing bottom lid, as well as an even flow of sand to fill divots more effectively. Fits all 2010-2016 The DRIVE PTV and 2016-2020 Drive² PTV models. Three-year limited warranty.

SINGLE SAND BOTTLE KIT

GCA-J0A40-00-00 (with handle) | **\$26.99**
GCA-J0B40-00-00 (without handle) | **\$25.99**

DUAL SAND BOTTLE KIT

GCA-J0A41-00-00 (with handle) | **\$68.99**
GCA-J0B41-00-00 (without handle) | **\$64.99**

SAND BOTTLE ONLY

GCA-J0A40-21-00 (with handle) | **\$16.99**
GCA-J0B40-21-00 (without handle) | **\$15.49**

NOTE: Fits existing filling stations at golf courses currently using Yamaha sand bottles. Sand bottles with or without handle are interchangeable. The Club and Ball Washer, Sand Bottle, Sand Bucket, and Coolers cannot be used in conjunction with The DRIVE Rear Facing Seat.

LIGHTING AND ELECTRICAL



12v Accessory Plug and Receptacle Kit

Never go without power again with this corrosion-resistant, water-resistant, marine-grade constructed 12v Accessory Plug and Receptacle Kit. Fits any vehicle with a 12v DC power source.

COMPLETE KIT

ATV-12VPK-00-KT | **\$44.99**

12v ACCESSORY PLUG ONLY

DBY-ACC56-00-85 | **\$17.99**

12v ACCESSORY RECEPTACLE ONLY

ATV-12VPC-00-RC | **\$21.99**



Waterproof USB Dual Charge Port

Add the luxury of a waterproof USB dual charge port to your golf car, boat, ATV, Side-by-Side, motorcycle, or even automobile. (The USB charge port uses the same mounting hole and connectors as the DC receptacle, making upgrading to USB a snap.) Universal fit for most golf cars, boats, side-by-sides, and other 12-volt applications.

GCA-JW970-00-00 | **\$22.99**

LIGHTING AND ELECTRICAL



HomeLink® Wireless Control System

We teamed with Gentex®, the world's most widely trusted and used vehicle-based wireless remote control system, to bring you this two-button HomeLink® Wireless Control System: the ultimate user-friendly way to connect your Yamaha to your home. Fits most golf cars, ATVs, Side-by-Sides, on-road and off-road motorcycles, marine, auto, commercial and RV models.

GCA-JC017-00-KT | **\$149.99**



UMAX Yamaha Backlit Logo

Give your UMAX an intimidatingly gritty edge to the appearance of your front grill that'll make a statement wherever you go. Easily connects to factory headlight for plug-and-play wiring. Fits all 2019-2020 UMAX Rally models.

J0G-H4104-V0-00 | **\$89.99**

NOTE: Trimming of front grill required for installation.



Trail Tech® Multi-Function Meter Kit

Easily gauge the time, your speed, accumulated run-time, distances, and more with our multi-function meter kit that will keep your essential info at-the-ready as you drive.

FITS ALL 2019- UMAX RALLY MODELS.

J0G-H35H0-V0-00 | **\$159.99**



Backlit Yamaha Logo Light

Add this Backlit Yamaha Logo Light anywhere from the front cowl of your DRIVE or Drive² to your Wolverine or Viking® and even your truck or family car. (Plug-and-play installation on Drive² PTV and Fleet models with Yamaha Genuine upgrade light kits.)

FITS ALL 2017- DRIVE² MODELS

GCA-J0D17-00-PC | **\$94.99**

YAMAHA LIGHTS THE WAY

What drives us? Our unwavering dedication to innovate the best for our customers. And at Yamaha, we know nothing will continue to be the best unless it evolves.

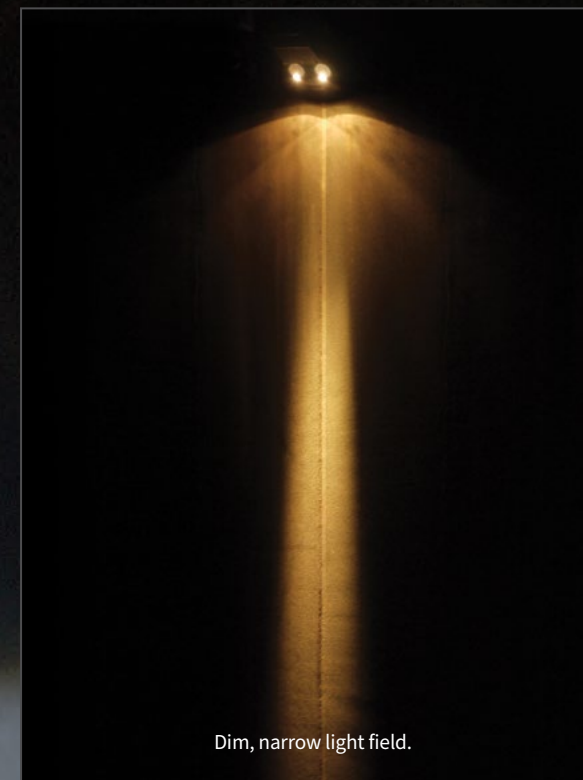
Halogen lights are simply no longer the best, so we've raised our standard. Now, all of our premium personal transportation vehicles come outfitted with LED headlights for a brighter, clearer ride.

Now more powerful than ever before, our lights deliver exceptionally less drain on batteries and produce double-to-triple the amount of visibility compared to our competitors. With Yamaha, you can enjoy your ride confidently, even after the sun sets.

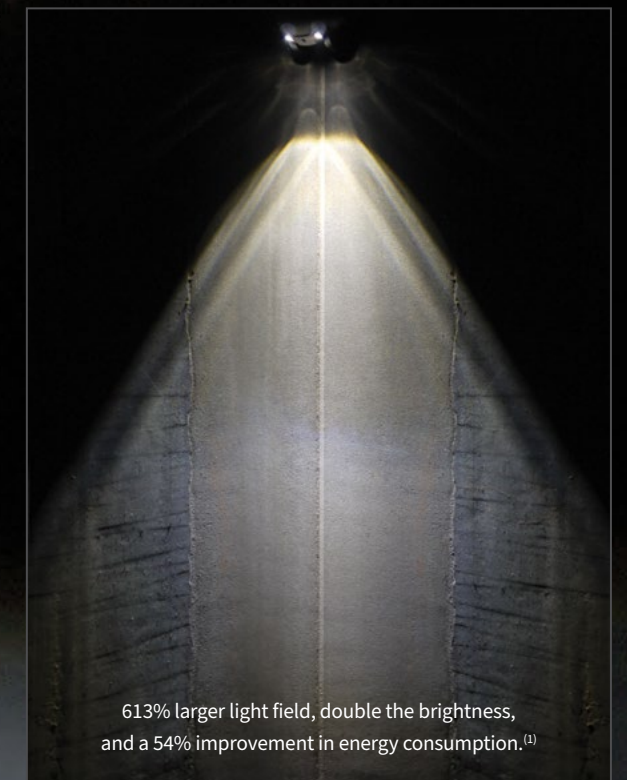
MAXIMUM VISIBILITY

Minimum Energy Used

HALOGEN
OLD INDUSTRY STANDARD



LED
NEW YAMAHA STANDARD



THE DRIVE² LIGHT SYSTEM



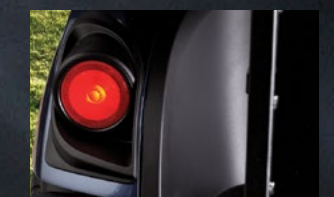
LED FRONT LOGO



LED HEADLIGHTS



LED TURN SIGNALS



LED TAILLIGHTS

LIGHTING AND ELECTRICAL



Drive² Premium PTV Upgrade Kit (EFI/AC)



Features a plug-and-play upgradeable premium harness, all new phosphor coated chip-on-board (COB) module that features full-power flashing amber LED front turn signals, the all-new basic amber LED front turn signal chip-on-board (COB) module, 20-diode LED taillight and brake lights, front and rear LED turn signals, 4-way flasher, horn, and side reflex reflectors. Includes Yamaha's exclusive, automotive-style, premium turn signal stalk that incorporates the headlight on/off switch, turn signal handle, and integrated horn button. Fits all Drive² models.

GCA-J0D12-01-PT | \$479.99



Drive² Ultra-Premium PTV Upgrade Kit



Features everything from the Premium Kit, in addition to the all-new waterproof/dustproof premium white LED accent/amber LED front turn signal chip-on-board (COB) module with clear lens assembly, as well as the all-new 26-LED sequential stop-tail-turn rear lights. Fits all Drive² models.

GCA-J0D12-00-UP | \$599.99

	PREMIUM		ULTRA-PREMIUM	
	PTVA	PTVE	PTVA	PTVE
Model Type				
Model Code	J0D PTV QuieTech EFI	J0E PTV PowerTech AC	J0D PTV QuieTech EFI	J0E PTV PowerTech AC
Upgrade Light Kit Part Number	GCA-J0D12-00-PT	GCA-J0E12-00-PT	GCA-J0D12-00-UP	
Upgrade Light Kit Name	DR2PTV EFI J0D PREMIUM UPG KIT	DR2PTV AC J0E PREMIUM UPG KIT	DR2PTV EFI J0D/AC J0E ULT-PRM UPG KIT	
Harness	Included		Included	
Tail / Brake Light	20-LED Included		Sequential 26-LED	
4-Way Flasher	Included		Included	
Rear LED Turn Signals	Included		Included	
Front Turn Signal	Basic COB LED Amber		Premium LED Amber with Accent Light	
Relay Harness	-		Included	
Driver Harness	-		Included	
Side Reflectors	Included		Included	

LIGHTING AND ELECTRICAL

THE NEXT GENERATION OF LIGHT KITS

The UMAX Premium Light Upgrade Kit and the UMAX Ultra-Premium Light Upgrade Kit will safely light your path and keep others informed about your travels. Both Premium and Ultra-Premium Light Upgrade Kits include Yamaha's exclusive new plug-and-play wiring harness that is fully expandable for further upgrades, such as turn signal indicators, side markers, and center high-mount stop/tail/turn lights.

- Plug-and-play installation
- Harness is weather-tight with sealed connectors
- Turn signal stalk incorporates the headlight off-low-high beam selector knob
- Adds high-beam functionality to factory LED headlights
- Turn signal handle integrated horn button
- Includes Yamaha's exclusive LED taillights (J0G-H4503-V0-00)
- All Yamaha Upgrade Light Kits include all necessary mounting hardware and detailed instructions with pictures
- Fits all UMAX Rally models



UMAX Premium Light Upgrade Kit

Features a plug-and-play upgradeable premium harness, all new phosphor coated chip-on-board (COB) module that features full-power flashing amber LED front turn signals, the all-new basic amber LED front turn signal chip-on-board (COB) module, LED taillight and brake lights, front and rear LED turn signals, 4-way flasher, horn, and side reflex reflectors. Includes Yamaha's exclusive, automotive-style, premium turn signal stalk that incorporates the headlight on/off switch, turn signal handle, and integrated horn button. Fits all 2019-2020 UMAX Rally models.

J0G-H43C0-T0-00 | \$499.99



UMAX Ultra-Premium Light Upgrade Kit

Features everything from the Premium Kit, in addition to the all-new waterproof/dustproof premium white LED accent/amber LED front turn signal chip-on-board (COB) module with clear lens assembly. Fits all 2019-2020 UMAX models.

J0G-H43C0-V0-00 | \$629.99

PROTECTION



Drive² Fender Flare Kit



Add sporty styling for an aggressive, tough look and feel while providing an extra level of protection from mud and water. Fender flares are made from a durable, injection-molded polypropylene, UV-resistant material. Fits 2016-2020 Drive² PTV and Drive² Adventurer Sport 2+2 models.

GCA-J2G56-00-00 | \$109.99

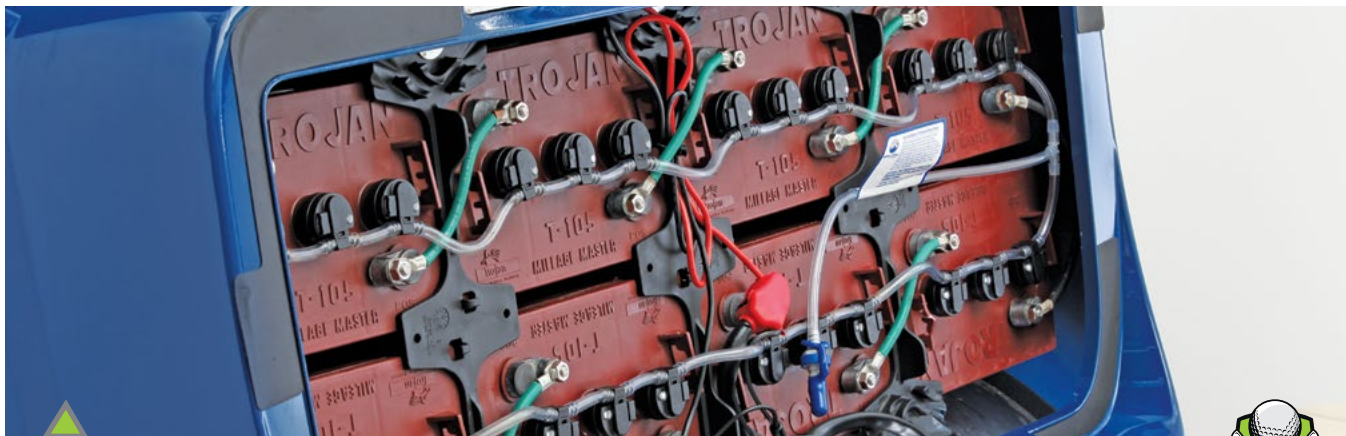


Drive² Front Brush Guard



Give your Drive² protection on the front end while adding a rugged flair with this front brush guard that's designed to seamlessly integrate with the front profile all while creating a tough, aggressive look. Fits 2016-2020 Drive² PTV and Drive² Adventurer Sport 2+2 models.

GCA-J2G67-00-00 | \$139.99



BFS™ Battery Watering System



Maximize the battery life of your Yamaha by using the BFS™ Battery Watering System that'll make routine maintenance a breeze. Low water levels in lead acid batteries are the primary cause of shortened battery life. Using a watering system saves time and money by filling the batteries simultaneously, providing a safer environment by reducing operators' exposure to battery acid, improving battery life and performance. Fits all 2019-2020 UMAX Rally AC models, 2010-2014 DRIVE PTV DC, 2015-2016 DRIVE AC, 2016-2020 Drive² PTV AC, and Drive² Adventurer Sport 2+2 AC models. For your correct kit, verify your battery type (MFG/MDL).

SIX 8-VOLT TROJAN T875
GCA-JW286-30-00 | \$159.99

EIGHT 6-VOLT TROJAN T105
GCA-JW286-40-00 | \$159.99

NOTE: Requires Gravity Tank (GCA-JW286-00-23), sold separately.

SERVICE



BFS™ Gravity Tank

Use the BFS™ Gravity Tank to add water to your Battery Watering System (GCA-JW286-30-00)—sold separately—using the power of gravity versus manually pumping the water into the system. For use on BFS™ by Battery Watering System.

GCA-JW286-00-23 | \$63.99

STEERING WHEELS



1



2

Formula Steering Wheel Kits

Give your Drive² that custom racer edge with our Formula Steering Wheel Kits that have formula-one-inspired, styled wheels with complete step-by-step instructions for easy installation.

Fits 2010-2016 DRIVE PTV, 2019-2020 UMAX Rally models, 2016-2020 Drive² PTV and Drive² Adventurer Sport 2+2 models.

1 FORMULA J SPORT WHEEL KIT
GCA-JW883-00-KT | \$149.99

2 FORMULA GT WHEEL KIT
GCA-JW883-10-KT | \$160.99

STEERING WHEEL INSTALLATION KIT ONLY
GCA-JW883-00-10 | \$39.99

*All steering wheels come with steering wheels, steering wheel adapter, hub, hardware, and detailed instructions.



Vinyl/Suede Combination Steering Wheel Kit

Step up your steering game with our premium suede wrapped/perforated vinyl wheel with contoured grip for the ultimate comfort and performance. Fits 2010-2016 DRIVE PTV, 2019-2020 UMAX Rally models, 2016-2020 Drive² PTV and Drive² Adventurer Sport 2+2 models.

GCA-J0E83-00-LT | \$139.99

*All steering wheels come with steering wheels, steering wheel adapter, hub, hardware, and detailed instructions.

STEERING WHEELS



Suede Series Steering Wheel Kit

Experience the Suede Series. This Yamaha-exclusive series offers each driver a premium wheel that is suede-wrapped, hand-stitched with custom-color thread, and finished with a contoured grip for the ultimate comfort and performance. Fits 2010-2016 DRIVE PTV, 2019-2020 UMAX Rally models, 2016-2020 Drive² PTV and Drive² Adventurer Sport 2+2 models.

- 1 GrayGCA-J0E83-00-GY | \$132.99
- 2 BlackGCA-J0E83-00-BK | \$132.99
- 3 Black with Beige Top MarkerGCA-J0E83-00-BG | \$132.99

TOPS



Drive² ClimaGuard™ Sun Top

Stay out of the sun and guarded from the elements with our injection-molded factory ClimaGuard™ Sun Top—the only sun top designed to completely match your Drive² in style and durability.

- Fits all DRIVE/Drive² models
- Black Sun Roof CoverJW1-K8314-21-00 | \$227.99
(Includes sun top skin only)
 - Black Sun Top AssemblyJW1-XK83A-20-00 | \$301.99
(Includes sun top skin and handles)
- Fits 2007-2016 DRIVE models
- Black Sun Top KitJW1-K84A0-20-00 | \$489.99
(Includes sun top skin with handles, sun top supports, drain tubes, and hardware)
- Fits 2016-2019 DRIVE² models
- Black Sun Top KitJ0B-K84A0-10-00 | \$391.99
(Includes sun top skin with handles, sun top supports, drain tubes, and hardware)

TRIMS AND ACCENTS



Vinyl Seat Cushion Assembly

Give your car a unique look and more luxurious feel by replacing your original seats with these stylish black seats made from high-quality Morbern® XLP™ vinyl.

Fits 2007-2016 DRIVE PTV, 2019-2020 Drive² PTV and Drive² Adventurer Sport 2+2 models.

- Seat BottomGCA-JW984-00-00 | \$164.99
 - Seat BackGCA-JW987-00-00 | \$154.99
- Fits 2019-2020 Drive² PTV and Drive² Adventurer Sport 2+2 models
- Seat BottomGCA-J0B84-21-BK | \$162.99
 - Seat BackGCA-JW987-00-00 | \$154.99



Yamaha Carpet Set

Make your ride as comfortable as your family car with our rubber-backed floorboard carpet set that is extremely durable and features our embroidered Yamaha logo.

Fits 2016-2019 Drive² models

- BeigeGCA-J0A62-00-BG | \$145.99
- GrayGCA-J0A62-00-GY | \$145.99
- BlackGCA-J0A62-00-BK | \$145.99

Fits 2010-2016 DRIVE models with divided bagwell

- BeigeGCA-JW162-30-OG | \$145.99
- BlackGCA-JW162-30-BK | \$145.99

Fits 2007-2010 DRIVE models with non-divided bagwell

- BeigeGCA-JW162-00-BG | \$145.99



TRIMS AND ACCENTS



Drive² Touring Seats

We introduced our new Touring seat with contrast stitching, embossed tuning fork logos and 4 colors to choose from. Fits all Drive² fleet models.

- 1 Gray Touring Seat JOB-K8410-V0-00 | \$649.99
- 2 Beige Touring Seat JOB-K8410-T0-00 | \$649.99
- 3 Brown Touring Seat..... JOB-K8410-S0-00 | \$649.99
- 4 Black Touring Seat..... JOB-K8410-R0-00 | \$649.99

TRIMS AND ACCENTS



Drive² All-Weather Floor Mat

Experience ultimate comfort and style, at an affordable price, with this all-weather, rubber floor mat made from the highest quality synthetic rubber to ensure superior performance and absolute interior protection—unlike the competition. Fits 2016-2020 Drive² PTV EFI and all 2016-2020 Drive² Adventurer Sport 2+2 models.

GCA-J0A72-00-00 | \$34.99



The DRIVE Flip Rear Facing Seat Kit

Whether you're traveling with friends and family or going solo with light cargo, The DRIVE Flip Rear Facing Seat Kit will allow you to easily convert extra seating into extra space and vice versa whenever you need to.

GCA-JP125-00-00 | \$1,060.99



Premium Side Mirror Kit

Eliminate your side-rear blind spots with this easily adjustable, mounted side mirror. Made with durable ABS plastic, this convex mirror fits any golf car with 1" square sun roof supports.

GCA-JC181-00-00 | \$32.99



Five-Panel Mirror Kit

Drive with confidence knowing you have full rear visibility with our five-panel mirror kit that allows you to see everything behind you. Fits 2016-2020 Drive² PTV and Drive² Adventurer Sport 2+2 models.

GCA-JW680-00-00 | \$44.99

TRIMS AND ACCENTS



Yamaha Kick Plate

Enhance your car's custom styling with our 38" T304 stainless steel, kick plate featuring an acid-etched Yamaha logo and hemmed edges for a superior finish. (Kit includes self-adhesive tape and plastic end caps and measures at 38"W x 2.67"H.) Fits 2019-2020 Drive² PTV and 2019-2020 Drive² Adventurer Sport 2+2 models.

GCA-JW189-00-00 | \$109.99

WHEELS



10" 12-Spoke J-Series Alloy Wheel Assembly

Give your golf car a classic edge with this easy, 12-spoke J-Series Direct Displacement Alloy Wheel Assembly. Fits all 2015-2016 DRIVE PTV and 2016-2020 Drive² PTV models.

- 1 Silver

GCA-J0E51-00-SL | \$189.99
- 2 Black Machine.....

GCA-J0E51-00-BM | \$189.99
- 3 All-Satin Black

GCA-J0E51-00-SB | \$189.99
- 4 Gold Machine (NOT SHOWN).....

GCA-J0E51-00-GD | \$189.99



10" 12-Spoke J-Series All-Terrain Alloy Wheel Assembly

Make going off trail a breeze with this 12-Spoke J-Series All-Terrain Alloy Wheel Assembly that will give you better traction and a ready-to-rumble appearance. Fits 2013-2016 Drive² Adventurer Sport 2+2 and 2016-2020 Drive² PTV models.

- 1 Silver

GCA-J2G51-00-SL | \$215.99
- 2 Black Machine.....

GCA-J2G51-00-BM | \$215.99
- 3 All-Satin Black

GCA-J2G51-00-SB | \$215.99
- 4 Gold Machine (NOT SHOWN).....

GCA-J2G51-00-GD | \$215.99

WHEELS



12" 16-Spoke V-Series Radial Alloy Wheel Assembly

V-Series alloy wheel assembly features the Kenda Kruizer KR20A tire, the golf car industry's first true automotive steel-belted radial design tire specifically designed for Low Speed (LSV) and Personal Transportation Vehicles (PTV) that are approved to be used on golf courses and in golf course communities. Combined with the all-new V-Series alloy wheel by Wheel Mate Products for the ultimate driving experience. Fits 2016-2020 Drive² PTV models.

- 1 Silver Machine

GCA-J0D52-2L-SL (Driver Side) | GCA-J0D52-2R-SL (Passenger Side) | \$229.99
- 2 Gunmetal

GCA-J0D52-2L-GM (Driver Side) | GCA-J0D52-2R-GM (Passenger Side) | \$229.99
- 3 Bronze

GCA-J0D52-2L-BZ (Driver Side) | GCA-J0D52-2R-BZ (Passenger Side) | \$229.99
- 4 Black Machine

GCA-J0D52-2L-BM (Driver Side) | GCA-J0D52-2R-BM (Passenger Side) | \$229.99 (NOT SHOWN)
- 5 Satin Black.....

GCA-J0D52-2L-SB (Driver Side) | GCA-J0D52-2R-SB (Passenger Side) | \$229.99 (NOT SHOWN)



10" 16-Spoke V-Series Wheel Assembly

Incorporate your bold style through your Drive² with our 10" 16-spoke wheel assembly—including a chrome center cap with Yamaha emblem, chrome lug nuts, a chrome valve stem cap, and a chrome valve stem cover. Fits 2015-2016 DRIVE PTV and 2017-2020 Drive² PTV models.

- Silver.....

GCA-J0E51-20-SL | \$189.99
- Black.....

GCA-J0E51-20-BM | \$189.99



10" 14-Spoke P-Series Alloy Wheel Assembly

If you're looking for a more comfortable ride, the 10" 14-Spoke Alloy Wheel will perfectly complement the exact style you're going for. Fits 2015-2016 DRIVE PTV and 2017-2020 Drive² PTV models.

- Silver.....

GCA-J0E51-10-SL | \$189.99



10" Casino Alloy Wheel Assembly

Dress up your Drive² with our 10" Casino Alloy Wheel Assembly that daringly mixes stunning angles with detailed, black-accented finesse. Fits 2015-2016 DRIVE PTV and 2016-2020 Drive² PTV models.

- Black Machine...

GCA-JC352-00-BK | \$189.99
- Silver.....

GCA-JC352-00-SL | \$189.99 (NOT SHOWN)



WIND PROTECTION



Drive² Windshields

Completely redesigned and re-engineered to be the best in the industry. Made from polycarbonate for higher impact resistance, greater tensile, and more flexural strength and UV-resistance. The fold-down windshield has a flexible, industry-first mechanical hinge that has a chemically-bonded weld for superior strength. Press-in rubber latches for the top grip and bottom grip clips provide a more secure, yet quiet fit—and is effortless to store in the folded position. Fits 2016-2020 Drive² PTV and Drive² Adventurer Sport 2+2 models.

1 One-piece Clear	J0B-K7200-01-00	\$144.99
2 One-piece Tinted	J0B-K7200-11-00	\$154.99
3 Hinged Tinted	J0B-K7200-34-00	\$164.99



Drive² Three-sided Enclosure

This three-sided tan enclosure perfectly complements the Club Pro Products® Cabana Golf Bag. Install in as little as five minutes with a patented extrusion system. The back panel allows access to the sweater basket. The cover disappears into a zippered sleeve when not in use. Fits all 2016-2020 Drive² models.

Black	GCA-J0A63-00-BK	\$379.99
Taupe	GCA-J0A63-00-00	\$379.99

NOTE: Will not work with Drive² polycarbonate windshield with mechanical hinge.



Drive² Four-sided Enclosures

Have a precisely engineered, custom-fitted sun top to keep cool and comfortable while cruising. With a mildew-/UV-/mold-resistant over-the-top, trackless design, installation is quick and easy so you can seamlessly move it from car to car without hassle. Fits all 2016-2020 Drive² models.

Fabric - Taupe	GCA-J0A65-00-SD	\$559.99
Vinyl - White	GCA-J0A65-00-00	\$519.99
Acrylic - Linen	GCA-J0A65-00-LN	\$625.99



PERFECT PROTECTION

Yamalube Quality Care Products



For the Right Protection, the Pros Know Where to Go

Golf cars work hard all day long. You need protection that does too. Make sure your Yamaha is always up for 18 with high-quality Yamalube Quality Care Products.

Better For Your Yamaha

Protect your Yamaha from the wear and tear of nearly continuous use with Yamalube 10W-30 All-purpose Golf Car oil. It includes high-quality mineral base stocks and provides incredible film strength.

Better Lubrication

At Yamaha, we have stringent lubrication standards for all of our vehicles—and other off-the-shelf oils just aren't up to par. That's why we've created our own. Our factory-approved engine oils include unparalleled mineral base stocks and technologically superior additives, providing excellent protection.

Better Protection

Yamalube Performance All-purpose Golf Car oil is available in the precise multi-grade viscosity recommended for your four-stroke Yamaha golf car, and meets or exceeds all factory requirements.

QUALITY CARE AND MAINTENANCE PRODUCTS



1

YamaClean® Vinyl Dressing

This one-step formula restores and protects vinyl, rubber, plastics, and leather. When dry, it leaves a transparent and water-repellent gloss coating that isn't slippery. Its UV protection also helps to prevent drying and cracking.

32 OZ. BOTTLE
ACC-YAMAC-VN-DR (QTY. 12*) | \$13.99



2

YamaClean® Pro-Wash Spray

YamaClean Pro-Wash Spray is a biodegradable vehicle spray wash that removes grime and soil. Rinses clean and helps keep your vehicle looking new. The most effective way to remove grime, grease, and bugs from most surfaces. For use on all Yamaha products: golf cars, ATVs, motorcycles, boats, WaveRunner® personal watercrafts, outboards, Side-by-Sides, snowmobiles, and generators.

32 OZ. BOTTLE
ACC-YAMAC-PW-SP (QTY. 12*) | \$9.95
1 GAL. BOTTLE
ACC-YAMAC-PW-GL (QTY. 4*) | \$29.95



3

YamaCoat™ Plastic Coating

A high-quality plastic coating that helps maintain the color and surface finish of plastic for that elusive factory-finish look. The unique comfort tip gives an even spray on components to be treated. Once applied, wipe off with a clean, dry cloth. Can also be left wet to help inhibit adhesion of mud and dirt for easy cleanup. Ideal for use on motocross and off-road motorcycles, ATVs, Side-by-Sides, and any other vehicles where plastic components are used.

10 OZ. CAN
ACC-YAMAC-OA-TC (QTY. 12*) | \$8.99



4

Spray Polish and Instant Detailer

This quick detailer will restore a lustrous shine to paint, chrome, glass, and smooth plastics like visors, windshields, and gauges. Gives textured plastics, rubber, and vinyl a beautiful satin finish. Anti-static properties repel dust and dirt to keep that shine.

14 OZ. CAN
ACC-SPRAY-PL-SH (QTY. 12*) | \$6.99



5

Yamashield™

Creates a non-conductive shield on surfaces that are exposed to the elements and provides extreme rust and corrosion protection, preserving metal components and electrical connections from moisture.

12 OZ. CAN
ACC-YAMSH-LD-00 (QTY. 12*) | \$9.49

QUALITY CARE AND MAINTENANCE PRODUCTS



Others simply follow industry standards.
WE PREFER TO SET THEM.

In 1967, after testing hundreds of lubrication combinations, Leo Lake developed a blend of oil that became the iconic Yamalube brand the world knows today.

To date, Yamalube remains the only oil built around the stringent demands, operating characteristics, and applications of not only Yamaha engines, but all powersport engines. With over 50 years of success, we still strive to make the best even better.

Yamaha now warrants the use of Yamalube in all of its golf car engines with the Yamalube Advantage™ engine lubrication limited warranty, covering 5,000 hours.



Yamalube® UMAX Tune-Up Kit

Think your UMAX wants the same oil as a minivan? Give it the care only the most rugged utility car on the market deserves: Yamalube (an oil kit specifically crafted to support the UMAX's performance, power, and versatility). Fits all 2019-2020 UMAX EFI models.

- CONTAINS:
- Yamalube 10W-30 Mineral Oil (37.2 oz.)
 - Genuine Yamaha Air Filter (QTY. 1)
 - Genuine Yamaha Pre-Air Filter (QTY. 1)
 - NGK® Spark Plug (QTY. 1)
 - Drain Plug Gasket (QTY. 1)

LUB-GCUMX-MT-KT (QTY. 4*) | \$51.99



Yamalube® Drive² Tune-Up Kit

Peak performance in a kit is what you'll be giving your Drive² with the Yamalube Drive² Tune-Up Kit. Keep your Yamaha at its best, longer. Fits 2016-2019 Drive² EFI models.

- CONTAINS:
- Yamalube 10W-30 Mineral Oil (1 Qts.)
 - Genuine Yamaha Air Filter (QTY. 1)
 - Genuine Yamaha Pre-Air Filter (QTY. 1)
 - NGK® Spark Plug (QTY. 1)
 - Drain Plug Gasket (QTY. 1)

LUB-GCDR2-MT-KT (QTY. 4*) | \$45.99



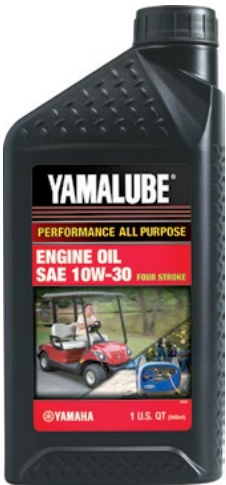
Yamalube® Golf Car Tune-Up Kit

Do you think your golf car wants the same oil used in a minivan? Give it the care only the best golf car in the industry deserves: Yamalube.

- CONTAINS:
- Yamalube 10W-30 Mineral Oil (1 Qts.)
 - Genuine Yamaha Air Filter (QTY. 1)
 - Genuine Yamaha Pre-Air Filter (QTY. 1)
 - Genuine Yamaha Fuel Filter (QTY. 1) (LUB-GCCRB-MT-KT Only)
 - NGK® Spark Plug (QTY. 1)
 - Drain Plug Gasket (QTY. 1)

FITS CARBURETED MODELS LUB-GCCRB-MT-KT (QTY. 4*) | \$49.99
FITS EFI MODELS LUB-GCEFI-MT-KT (QTY. 4*) | \$45.99

QUALITY CARE AND MAINTENANCE PRODUCTS



Yamalube® for Golf Car

Give your Yamaha golf car the only oil that is specifically formulated to enhance its performance. Fits all Yamaha golf car models.

1-QT. BOTTLE
LUB-10W30-GG-12 (QTY. 12*) | \$3.99



Fuel Med RX

Prevent fuel system corrosion, improve performance, and extend the life of your Yamaha by using Fuel Med RX. Routine use will fight back phase separation, moisture damage, dissolve gum, and varnish in your carburetion system—all while extending spark plug life. Universal fit.

3.2 OZ. BOTTLE (BLENDED)
ACC-FUELM-RX-04 (QTY. 48*) | \$1.95

16 OZ. BOTTLE (CONCENTRATED; CHAMBERED BOTTLE FOR EASY MEASURING)
ACC-FUELM-RX-16 (QTY. 12*) | \$5.99

NOTE: Use continuous treat rate if in-season fuel will sit in a tank for more than seven days. The storage treat rate keeps fuel fresh for up to one year.



Engine Med RX

Empower your golf car with superior carbon deposit control, cleaning injectors, carburetors, intake valves and ports, and combustion chambers. Also protects fuel system metals from ethanol sulfate salt corrosion. Add it at every fill up to avoid unnecessary engine repairs due to poor quality gas and to keep your engine clean and running efficiently. Universal fit.

3.2 OZ. BOTTLE (BLENDED)
ACC-ENGINE-RX-04 (QTY. 48*) | \$2.49

16 OZ. BOTTLE (CONCENTRATED; CHAMBERED BOTTLE)
ACC-ENGINE-RX-16 (QTY. 12*) | \$23.99

*Dealer order pack quantities shown—available individually from your dealer.

This document contains many of the valuable trademarks and service marks owned and used by Yamaha throughout the world. The document may also contain references to other company, brand, and product names that may be the trademarks/service marks of their respective owners. Unless noted otherwise, these company, brand, and product names are used herein for identification purposes only, and reference to any names, marks, products, or services of third parties do not constitute or imply endorsement, sponsorship, or recommendation of the third party or the product or services.

SPECIFICATIONS

DRIVE² QUIETECH EFI

DIMENSIONS	
OVERALL LENGTH	93.6 in (238cm)
OVERALL WIDTH	47.3 in (120cm)
OVERALL HEIGHT (WITH SUN TOP)	70.2 in (178 cm)
WHEELBASE	64.4 in (164cm)
FRONT WHEEL TREAD	35 in (89cm)
REAR WHEEL TREAD	38.7 in (98cm)
MINIMUM GROUND CLEARANCE	5.5 in (14cm)
DRY WEIGHT	751 lb (341kg)

GENERAL	
FUEL TANK CAPACITY	5.8 U.S. gal (22 liters)
TIRE SIZE	205/65-10 DOT (4-ply rating)
SEATING CAPACITY	Two persons
AVAILABLE MODEL COLORS	Glacier Metallic: Atomic Flame, Mica, Graphite, Bluestone, Moonstone, Onyx, Aqua Blue, Jasper
AVAILABLE SEAT COLORS	Standard: Stone Optional: Black
AVAILABLE SUNTOP COLORS	Standard: Stone Optional: Black
WARRANTY	Standard 4-year limited vehicle warranty

ENGINE / DRIVE TRAIN	
ENGINE TYPE	Yamaha-built 357cc, low-emission single cylinder 60° incline OHV
LUBRICATION SYSTEM	Splash-style positive oil lubrication
OIL CAPACITY	1 U.S. quart (1 liter, 1000 cc)
AIR CLEANER	Two-stage, urethane-foam pre-cleaner, and high-capacity pleated paper cartridge
COOLING SYSTEM	Forced air
FUEL SYSTEM	Electronic fuel injection
STARTING SYSTEM	Starter generator with pedal start system

CHASSIS	
FRAME	HybriCore™ Chassis features a robotic welded automotive ladder-style steel frame protected with a multi-step full-immersion phosphate treatment, electro-deposition epoxy-based coating, and an electrostatic applied polyester/urethane powder topcoat
BODY	Mold-in Polypropylene for Glacier color. Custom-formulated thermoplastic olefin painted with a two-part top coat of high-luster automotive-grade polyurethane
STEERING	Self-compensating double reduction helical rack-and-pinion
FRONT SUSPENSION	Tru-Trak II™ fully independent automotive-style strut suspension
REAR SUSPENSION	Fully independent automotive-style strut suspension
BRAKES	Self-adjusting mechanical, rear wheel drum brakes
BUMPERS	Front and rear 5 mph energy-absorbing bumpers

PERFORMANCE	
MAX SPEED ADJUSTABLE	19 mph (31 kph)
MINIMUM TURNING RADIUS	9.5 ft (2.9m)

DRIVE² POWERTECH AC

DIMENSIONS	
OVERALL LENGTH	93.6 in (238cm)
OVERALL WIDTH	47.3 in (120cm)
OVERALL HEIGHT (WITH SUN TOP)	70.2 in (178cm)
WHEELBASE	64.4 in (164cm)
FRONT WHEEL TREAD	34.8 in (89cm)
REAR WHEEL TREAD	38.3 in (97cm)
MINIMUM GROUND CLEARANCE	5.5 in (14 cm)
DRY WEIGHT (WITH SUN TOP)	665.8 lb (302 kb)

GENERAL	
TIRE SIZE	18 x 8.5 - 8 (4-ply rating)
SEATING CAPACITY	Two persons
AVAILABLE MODEL COLORS	Glacier Metallic: Atomic Flame, Mica, Graphite, Bluestone, Moonstone, Onyx, Aqua Blue, Jasper
AVAILABLE SEAT & SUN TOP COLOR	Standard: Stone Optional: Black
WARRANTY	Standard 4-year limited vehicle warranty

MOTOR / DRIVE TRAIN / POWER SUPPLY	
MOTOR	48-volt AC Motor
OUTPUT RATING	6.7 hp (5.0kW)
MOTOR CONTROL UNIT	Toyota Industries-built motor controller unit
BATTERIES	Optional six 8-volt Motive T875-AGM batteries Optional six 8-volt Motive T-875 FLA batteries with Hydrolink Watering System
CHARGER	Delta-Q Charger

CHASSIS	
FRAME	HybriCore™ Chassis features a robotic welded automotive ladder-style steel frame protected with a multi-step full-immersion phosphate treatment, electro-deposition epoxy-based coating, and an electrostatic applied polyester/urethane powder topcoat
BODY	Mold-in Polypropylene for Glacier and Sunstone colors. Custom-formulated thermoplastic olefin painted with a two-part top coat of high-luster automotive-grade polyurethane
STEERING	Self-compensating double reduction helical rack-and pinion
FRONT SUSPENSION	Tru-Trak II™ fully independent automotive-style strut suspension
REAR SUSPENSION	Fully independent automotive-style strut suspension
BRAKES	Self-adjusting mechanical, rear wheel drum brakes
BUMPERS	Front and rear 5 mph energy-absorbing bumpers

PERFORMANCE	
MAX SPEED ADJUSTABLE	15.0 mph (24 km/h)
MINIMUM TURNING RADIUS	9.2 ft (2.8 m)

DRIVE² ADVENTURER SPORT 2+2 EFI

DIMENSIONS	
OVERALL LENGTH	108.3 in (275cm)
OVERALL WIDTH	50.8 in (129cm)
OVERALL HEIGHT (WITHOUT SUN TOP)	50 in (127cm)
WHEELBASE	64.4 in (164cm)
FRONT WHEEL TREAD	37.8 in (96cm)
REAR WHEEL TREAD	39.8 in (101cm)
MINIMUM GROUND CLEARANCE	6.3 in (16 cm)
DRY WEIGHT	934 lb (424kg)

GENERAL	
FUEL TANK CAPACITY	5.8 U.S. gal (22 liters)
TIRE SIZE	20x10-8 (4-ply rating)
SEATING CAPACITY	Four persons
AVAILABLE MODEL COLORS	Glacier Metallic: Atomic Flame, Mica, Graphite, Bluestone, Moonstone, Onyx, Aqua Blue, Jasper
AVAILABLE SEAT COLORS	Standard: Stone Optional: Black
AVAILABLE SUNTOP COLORS	Standard: Stone Optional: Black
WARRANTY	Standard 2-year limited vehicle warranty

ENGINE / DRIVE TRAIN	
ENGINE TYPE	Yamaha-built 357cc, low-emission single cylinder 60° incline OHV
LUBRICATION SYSTEM	Splash-style positive oil lubrication
OIL CAPACITY	1 U.S. quart (1 liter, 1000 cc)
AIR CLEANER	Two-stage, urethane-foam pre-cleaner, and high-capacity pleated paper cartridge
COOLING SYSTEM	Forced air
FUEL SYSTEM	Electronic fuel injection
STARTING SYSTEM	Starter generator with pedal start system

CHASSIS	
FRAME	HybriCore™ Chassis features a robotic welded automotive ladder-style steel frame protected with a multi-step full-immersion phosphate treatment, electro-deposition epoxy-based coating, and an electrostatic applied polyester/urethane powder topcoat
BODY	Mold-in Polypropylene for Glacier color. Custom-formulated thermoplastic olefin painted with a two-part top coat of high-luster automotive-grade polyurethane
STEERING	Self-compensating double reduction helical rack-and-pinion
FRONT SUSPENSION	Tru-Trak II™ fully independent automotive-style strut suspension
REAR SUSPENSION	Fully independent automotive-style strut suspension
BRAKES	Self-adjusting mechanical, rear wheel drum brakes
BUMPERS	Front and rear 5 mph energy-absorbing bumpers

PERFORMANCE	
MAX SPEED	14.9 mph (24 kph)
MINIMUM TURNING RADIUS	9 ft (3m)

DRIVE² ADVENTURER SPORT 2+2 AC

DIMENSIONS	
OVERALL LENGTH	108.3 in (275cm)
OVERALL WIDTH	50.8 in (129cm)
OVERALL HEIGHT (WITHOUT SUN TOP)	50 in (127cm)
WHEELBASE	64.4 in (164cm)
FRONT WHEEL TREAD	37.8 in (96cm)
REAR WHEEL TREAD	39.8 in (101cm)
MINIMUM GROUND CLEARANCE	5.1 in (13 cm)
DRY WEIGHT	778 lb (353kg)

GENERAL	
TIRE SIZE	20x10-8 (4-ply rating)
SEATING CAPACITY	Four persons
AVAILABLE MODEL COLORS	Glacier Metallic: Atomic Flame, Mica, Graphite, Bluestone, Moonstone, Onyx, Aqua Blue, Jasper
AVAILABLE SEAT COLORS	Standard: Stone Optional: Black
AVAILABLE SUNTOP COLORS	Standard: Stone Optional: Black
WARRANTY	Standard 2-year limited vehicle warranty

MOTOR / DRIVE TRAIN / POWER SUPPLY	
MOTOR	48-volt AC
OUTPUT RATING	6.7 hp (5.0 kW)
MOTOR CONTROL UNIT	NEOS 350 amp AC controller by Toyota Industries Corporation
BATTERIES	Standard: Six 8-volt Trojan T-875 Batteries . Optional: Eight 6-volt Trojan T-105 Batteries
CHARGER	Delta-Q

CHASSIS	
FRAME	HybriCore™ Chassis features a robotic welded automotive ladder-style steel frame protected with a multi-step full-immersion phosphate treatment, electro-deposition epoxy-based coating, and an electrostatic applied polyester/urethane powder topcoat
BODY	Mold-in Polypropylene for Glacier color. Custom-formulated thermoplastic olefin painted with a two-part top coat of high-luster automotive-grade polyurethane
STEERING	Self-compensating double reduction helical rack-and-pinion
FRONT SUSPENSION	Tru-Trak II™ fully independent automotive-style strut suspension
REAR SUSPENSION	Unit swing arm with DUAL RATE coil springs overhydraulic shock absorbers
BRAKES	Self-adjusting mechanical, rear wheel drum brakes
BUMPERS	Front and rear 5 mph energy-absorbing bumpers

PERFORMANCE	
MAX SPEED	14.9 mph (24 kph)
MINIMUM TURNING RADIUS	9 ft (3m)

UMAX RALLY ONE EFI

DIMENSIONS	
OVERALL LENGTH	114.6 in (291.2 cm)
OVERALL HEIGHT (NO SUN TOP)	50.7 in (128.8 cm)
OVERALL HEIGHT (W/ SUN TOP)	74.02 in (188 cm)
OVERALL WIDTH	53.5 in (136 cm)
WHEELBASE	66.3 in (168.3 cm)
FRONT WHEEL TREAD	40.9 in (104.0 cm)
REAR WHEEL TREAD	41.3 in (104.8 cm)
MINIMUM GROUND CLEARANCE	6.0 in (15.2 cm)
DRY WEIGHT (WITH SUN TOP)	999.8 lb (453.5 kg)

GENERAL	
FUEL TANK CAPACITY	5.2 US GAL (20 LITERS)
TIRE SIZE	20x10-10 4-ply Monitor K389 (front) K500 (rear)
SEATING CAPACITY	Two persons
AVAILABLE MODEL COLORS	Glacier Metallic: Jasper, Carbon, Aqua Blue, Noble Orange, Evergreen
AVAILABLE SEAT COLORS	Black
AVAILABLE SUNTOP COLORS	Black
WARRANTY	Standard 2-year limited vehicle warranty

ENGINE / DRIVE TRAIN	
ENGINE TYPE	Yamaha built 402cc, Low Emission Single Cylinder 60deg Incline OHV
LUBRICATION SYSTEM	Splash-style positive oil lubrication
OIL CAPACITY	1.16 U.S. quart (1.1 liter, 1100cc), Yamalube 10W-30
AIR CLEANER	Two-stage, urethane-foam pre-cleaner, and high-capacity pleated paper cartridge
COOLING SYSTEM	Forced air
FUEL SYSTEM	Electronic fuel injection
STARTING SYSTEM	Starter generator with pedal start system
HORSEPOWER	3600 rpm (14.25 hp)

CHASSIS	
FRAME	HybriCore™ Chassis features a robotic welded automotive ladder-style steel frame protected with a multi-step full-immersion phosphate treatment, electro-deposition epoxy-based coating, and an electrostatic applied polyester/urethane powder topcoat
BODY	Custom-formulated thermoplastic olefin painted with a two-part top coat of high-luster automotive-grade polyurethane
STEERING	Self-compensating double reduction helical rack-and-pinion
FRONT SUSPENSION	Tru-Trak II™ fully independent automotive-style strut suspension
REAR SUSPENSION	Unit swing arm with DUAL RATE coil springs over hydraulic shock absorbers
BRAKES	Self-adjusting mechanical, rear wheel drum brakes
CARGO BED MAX LOAD	300 lb
ROLLING TRAILER MAX WEIGHT	800 lb
MAX TONGUE WEIGHT	100 lb
VEHICLE RATED CAPACITY	800 lb
CARGO BED DIMENSIONS	33.2" L x 45.9" W x 11.9" H

PERFORMANCE	
MAX FORWARD SPEED	19.5 mph (31.4 km/h)
MAX REVERSE SPEED	17.5 mph (28 km/h)
MINIMUM TURNING RADIUS	3.48m
G.V.W.	1,708 lb

UMAX RALLY TWO EFI

DIMENSIONS	
OVERALL LENGTH	122.6 in (311.3 cm)
OVERALL HEIGHT (NO SUN TOP)	50.7 in (128.8cm)
OVERALL HEIGHT (WITH SUN TOP)	74.02 in (188 cm)
OVERALL WIDTH	53.5 in (136 cm)
WHEELBASE	77.3 in (196.3 cm)
FRONT WHEEL TREAD	41.3 in (104.8 cm)
REAR WHEEL TREAD	41.3 in (104.8 cm)
MINIMUM GROUND CLEARANCE	6.0 in (15.2 cm)
DRY WEIGHT (WITH SUN TOP)	1070.3 lb (485.5 kg)

GENERAL	
FUEL TANK CAPACITY	5.2 US GAL (20 LITERS)
TIRE SIZE	23x10.5-12 4-ply Monitor K389 (front) K500 (rear)
SEATING CAPACITY	Two persons
AVAILABLE MODEL COLORS	Glacier Metallic: Jasper, Carbon, Aqua Blue, Noble Orange, Evergreen
AVAILABLE SEAT COLORS	Black
AVAILABLE SUNTOP COLORS	Black
WARRANTY	Standard 2-year limited vehicle warranty

ENGINE / DRIVE TRAIN	
ENGINE TYPE	Yamaha built 402cc, Low Emission Single Cylinder 60° Incline OHV
LUBRICATION SYSTEM	Splash-style positive oil lubrication
OIL CAPACITY	1.16 U.S. quart (1.1 liter, 1100cc), Yamalube® 10W-30
AIR CLEANER	Two-stage, urethane-foam pre-cleaner, and high-capacity pleated paper cartridge
COOLING SYSTEM	Forced air
FUEL SYSTEM	Electronic fuel injection
STARTING SYSTEM	Starter generator with pedal start system
HORSEPOWER	3600 rpm (14.25 hp)

CHASSIS	
FRAME	HybriCore™ Chassis features a robotic welded automotive ladder-style steel frame protected with a multi-step full-immersion phosphate treatment, electro-deposition epoxy-based coating, and an electrostatic applied polyester/urethane powder topcoat
BODY	Custom-formulated thermoplastic olefin painted with a two-part top coat of high-luster automotive-grade polyurethane
STEERING	Self-compensating double reduction helical rack-and-pinion
FRONT SUSPENSION	Tru-Trak II™ fully independent automotive-style strut suspension
REAR SUSPENSION	Unit swing arm with DUAL RATE coil springs over hydraulic shock absorbers
BRAKES	Self-adjusting mechanical, front and rear wheel drum brakes
CARGO BED MAX LOAD	800 lb
ROLLING TRAILER MAX WEIGHT	1,500 lb
MAX TONGUE WEIGHT	150 lb
VEHICLE RATED CAPACITY	1,500 lb
CARGO BED DIMENSIONS	41.1" L x 45.9" W x 11.9" H

PERFORMANCE	
MAX FORWARD SPEED	19.5 mph (31.4 km/h)
MAX REVERSE SPEED	17.5 mph (28 km/h)
MINIMUM TURNING RADIUS	3.98m
G.V.W.	2,533 lb

UMAX RALLY TWO AC

DIMENSIONS	
OVERALL LENGTH	122.6 in (311.3 cm)
OVERALL HEIGHT (NO SUN TOP)	50.7 in (128.8 cm)
OVERALL HEIGHT (WITH SUN TOP)	74.02 in (188 cm)
OVERALL WIDTH	53.5 in (136 cm)
WHEELBASE	77.3 in (196.3 cm)
FRONT WHEEL TREAD	41.3 in (104.8 cm)
REAR WHEEL TREAD	41.3 in (104.8 cm)
MINIMUM GROUND CLEARANCE	6.0 in (15.2 cm)
DRY WEIGHT (WITH SUN TOP)	984.4 (446.5 kg)

GENERAL	
TIRE SIZE	23x10.5-12 4-ply Monitor K389 (front) K500 (rear)
SEATING CAPACITY	Two persons
AVAILABLE MODEL COLORS	Glacier Metallic: Jasper, Carbon, Aqua Blue, Noble Orange, Evergreen
AVAILABLE SEAT COLORS	Black
AVAILABLE SUNTOP COLORS	Black
WARRANTY	Standard 2-year limited vehicle warranty

ENGINE / DRIVE TRAIN	
MOTOR	48-volt AC
OUTPUT RATING	6.7 hp (5.0 kW)
MOTOR CONTROL UNIT	NEOS 350 amp AC controller by Toyota Industries Corporation
BATTERIES	Standard: Eight 6-volt Trojan T-105 Batteries

CHASSIS	
FRAME	HybriCore™ Chassis features a robotic welded automotive ladder-style steel frame protected with a multi-step full-immersion phosphate treatment, electro-deposition epoxy-based coating, and an electrostatic applied polyester/urethane powder topcoat
BODY	Custom-formulated thermoplastic olefin painted with a two-part top coat of high-luster automotive-grade polyurethane
STEERING	Self-compensating double reduction helical rack-and-pinion
FRONT SUSPENSION	Tru-Trak II™ fully independent automotive-style strut suspension
REAR SUSPENSION	Unit swing arm with DUAL RATE coil springs over hydraulic shock absorbers
BRAKES	Self-adjusting mechanical, front and rear wheel drum brakes
CARGO BED MAX LOAD	800 lb
ROLLING TRAILER MAX WEIGHT	1,500 lb
MAX TONGUE WEIGHT	150 lb
VEHICLE RATED CAPACITY	1,500 lb
CARGO BED DIMENSIONS	41.1" L x 45.9" W x 11.9" H

PERFORMANCE	
MAX FORWARD SPEED	19.5 mph (31.4 km/h)
MAX REVERSE SPEED	6.2 mph (10 km/h)
MINIMUM TURNING RADIUS	3.98m
G.V.W.	2,910 lb

UMAX RALLY 2+2 EFI

DIMENSIONS	
OVERALL LENGTH	134.37 in (341.3cm)
OVERALL HEIGHT (NO SUN TOP)	57.48 in (146cm)
OVERALL HEIGHT (WITH SUN TOP)	77.20 in (196.1cm)
OVERALL WIDTH	53.54 in (136cm)
WHEELBASE	77.28 in (196.3cm)
FRONT WHEEL TREAD	41.26 in (104.8cm)
REAR WHEEL TREAD	41.26 in (104.8cm)
MINIMUM GROUND CLEARANCE	5.94 in (15.1cm)
DRY WEIGHT (WITH SUN TOP)	1321 lb (599 kg)

GENERAL	
FUEL TANK CAPACITY	5.2 US GAL (20 LITERS)
TIRE SIZE	23x10.5-12 4-ply Monitor K389 (front) K500 (rear)
SEATING CAPACITY	Four persons
AVAILABLE MODEL COLORS	Glacier Metallic: Jasper, Carbon, Aqua Blue, Noble Orange, Evergreen
AVAILABLE SEAT COLORS	Black
AVAILABLE SUNTOP COLORS	Black
WARRANTY	Standard 2-year limited vehicle warranty

ENGINE / DRIVE TRAIN	
ENGINE TYPE	Yamaha built 402cc, Low Emission Single Cylinder 60° Incline OHV
LUBRICATION SYSTEM	Splash-style positive oil lubrication
OIL CAPACITY	1.16 U.S. quart (1.1 liter, 1100cc), Yamalube® 10W-30
AIR CLEANER	Two-stage, urethane-foam pre-cleaner, and high-capacity pleated paper cartridge
COOLING SYSTEM	Forced air
FUEL SYSTEM	Electronic fuel injection
STARTING SYSTEM	Starter generator with pedal start system
HORSEPOWER	3600 rpm (12.67 hp)

CHASSIS	
FRAME	HybriCore™ Chassis features a robotic welded automotive ladder-style steel frame protected with a multi-step full-immersion phosphate treatment, electro-deposition epoxy-based coating, and an electrostatic applied polyester/urethane powder topcoat
BODY	Custom-formulated thermoplastic olefin painted with a two-part top coat of high-luster automotive-grade polyurethane
STEERING	Self-compensating double reduction helical rack-and-pinion
FRONT SUSPENSION	Tru-Trak II™ fully independent automotive-style strut suspension
REAR SUSPENSION	Unit swing arm with DUAL RATE coil springs over hydraulic shock absorbers
BRAKES	Mechanical, 4-wheel drum
FLIP-SEAT CARGO MAX LOAD	250 lb
MAXIMUM COMBINED LOAD WITH TWO PASSENGERS AND CARGO	400 lb
VEHICLE RATED CAPACITY	1,000 lb

PERFORMANCE	
MAX FORWARD SPEED	15 mph (24.1 km/h)
MAX REVERSE SPEED	15 mph (24.1 km/h)
MINIMUM TURNING RADIUS	3.98m
G.V.W.	2,717 lb

UMAX RALLY 2+2 AC

DIMENSIONS	
OVERALL LENGTH	134.37 in (341.3 cm)
OVERALL HEIGHT (NO SUN TOP)	57.48 in (146cm)
OVERALL HEIGHT (WITH SUN TOP)	77.20 in (196.1cm)
OVERALL WIDTH	53.54 in (136cm)
WHEELBASE	77.28 in (196.3cm)
FRONT WHEEL TREAD	41.26 in (104.8cm)
REAR WHEEL TREAD	41.26 in (104.8cm)
MINIMUM GROUND CLEARANCE	5.98 in (15.2cm)
DRY WEIGHT (WITH SUN TOP)	1212 lb (550 kg)

GENERAL	
TIRE SIZE	23x10.5-12 4-ply Monitor K389 (front) K500 (rear)
SEATING CAPACITY	Four persons
AVAILABLE MODEL COLORS	Glacier Metallic: Jasper, Carbon, Aqua Blue, Noble Orange, Evergreen
AVAILABLE SEAT COLORS	Black
AVAILABLE SUNTOP COLORS	Black
WARRANTY	Standard 2-year limited vehicle warranty

ENGINE / DRIVE TRAIN	
MOTOR	48-volt AC
OUTPUT RATING	6.7 hp (5.0 kW FOR 60 minutes)
MOTOR CONTROL UNIT	NEOS 350 amp AC controller by Toyota Industries Corporation
BATTERIES	Standard: Eight 6-volt Trojan T-105 Batteries

CHASSIS	
FRAME	HybriCore™ Chassis features a robotic welded automotive ladder-style steel frame protected with a multi-step full-immersion phosphate treatment, electro-deposition epoxy-based coating, and an electrostatic applied polyester/urethane powder topcoat
BODY	Custom-formulated thermoplastic olefin painted with a two-part top coat of high-luster automotive-grade polyurethane
STEERING	Self-compensating double reduction helical rack-and-pinion
FRONT SUSPENSION	Tru-Trak II™ fully independent automotive-style strut suspension
REAR SUSPENSION	Unit swing arm with DUAL RATE coil springs over hydraulic shock absorbers
BRAKES	Mechanical, 4-wheel drum
FLIP-SEAT CARGO MAX LOAD	250 lb
ROLLING TRAILER MAX WEIGHT	1,200 lb
MAXIMUM COMBINED LOAD WITH TWO PASSENGERS AND CARGO	400 lb
VEHICLE RATED CAPACITY	1,000 lb
CARGO BED DIMENSIONS	41.1" L x 45.9" W x 11.9" H

PERFORMANCE	
MAX FORWARD SPEED	15 mph (24.1 km/h)
MAX REVERSE SPEED	6.2 mph (10 km/h)
MINIMUM TURNING RADIUS	3.98m
G.V.W.	2,345 lb



1270 Chastain Road NW,
Kennesaw, Georgia 30144
1.866.747.4027 | YamahaGolfCar.com



THE EASY CHOICE